



# RL-A05

## PARTS LIST

USE THIS PARTS LIST 102686D FOR:

Hoist Serial number to \_\_\_\_\_

For older hoists use the following:

Parts list no. 102686C for serial number 305 to \_\_\_\_\_.

Parts list no. 102686B for serial number 200 to 304.

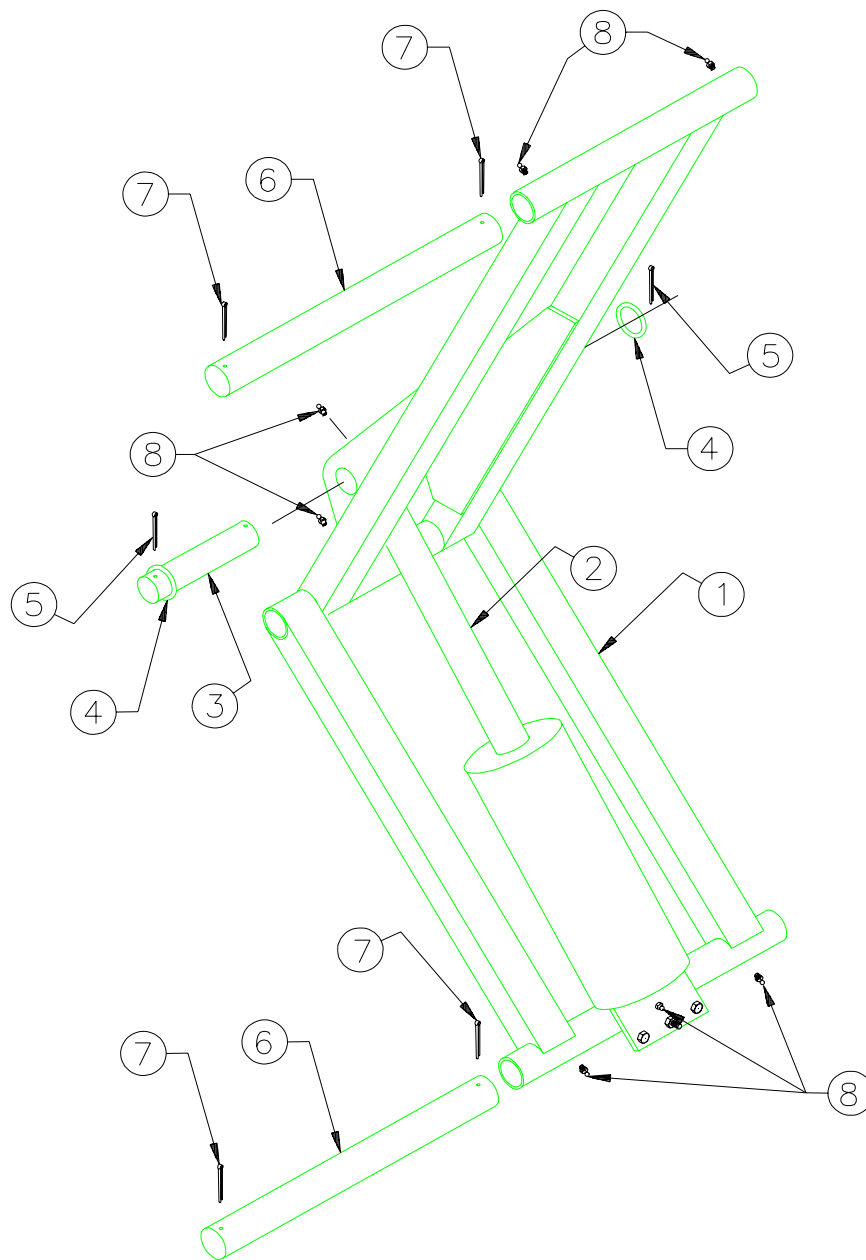
Parts list no. 102686A for serial number 001 to 199.

**FOR PUMP PART NUMBERS CONSULT PARTS LIST SUPPLIED WITH THE PUMP**

Harsh International, Inc.  
600 Oak Avenue  
Eaton, CO 80615  
(970) 454-2291  
Fax: (970) 454-3491

Price: \$2.50

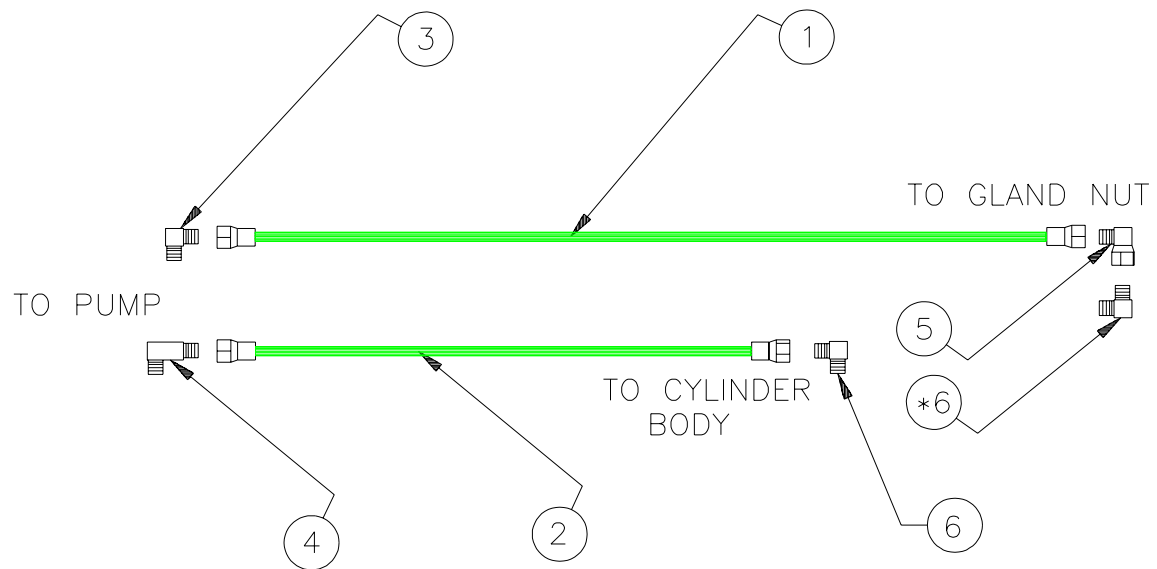
Parts book number: **102686D**



**A05 HOIST  
SCISSOR ASSEMBLY**

ITEM	PART #	QTY	DESCRIPTION	ITEM	PART #	QTY	DESCRIPTION
1	A16125	1	SCISSOR ASSEMBLY	6	16284	2	PIN, HOIST MOUNT
*2	A1720	1	CYLINDER ASSEMBLY (COMPLETE)	7	101750	4	COTTER PIN
3	16147	1	CYLINDER MOUNT PIN	8	100037	7	GREASE FITTING, DRIVE IN
4	101123	2	WASHER, FLAT	*9	A9774	1	DECAL KIT
5	100282	2	COTTER PIN				

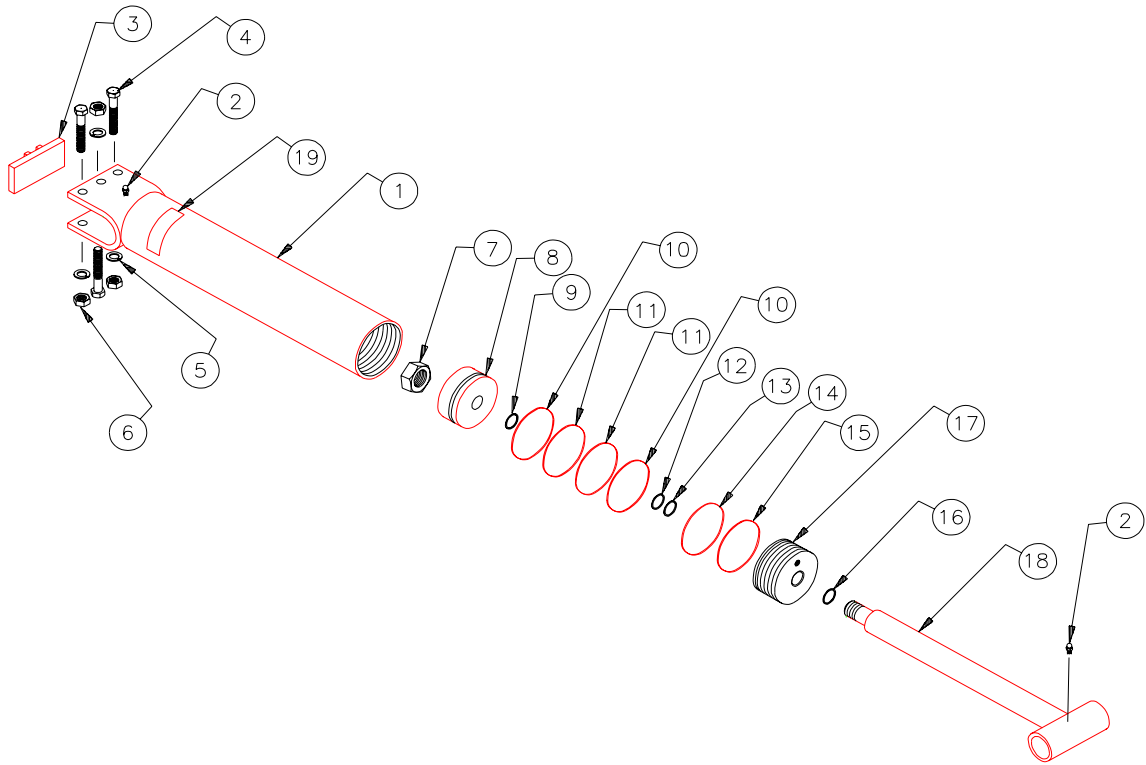
**NOTE:** \*2 - A1720 INCLUDES CYLINDER ASSY, SCREWS, LOCK WASHERS, NUTS, ZERKS AND SPACER.



**A05 HOIST  
HOSE ASSEMBLY**

ITEM	PART #	QTY	DESCRIPTION	ITEM	PART #	QTY	DESCRIPTION
1	102238	1	HOSE ASSEMBLY 95" LG	4	101966	1	ELBOW,90 DEG 1/4 NPT (LONG)
2	102239	1	HOSE ASSEMBLY 75" LG	5	101937	1	ELBOW,90 DEG #6 JIC-#6 JIC
3	101643	1	ELBOW,90 DEG 1/4 NPT- #6 JIC	*6	101642	2	ELBOW,90 DEG #6 JIC-#6 SAE

**NOTE:** \*6 - IS INCLUDED WITH CYLINDER ASSY.



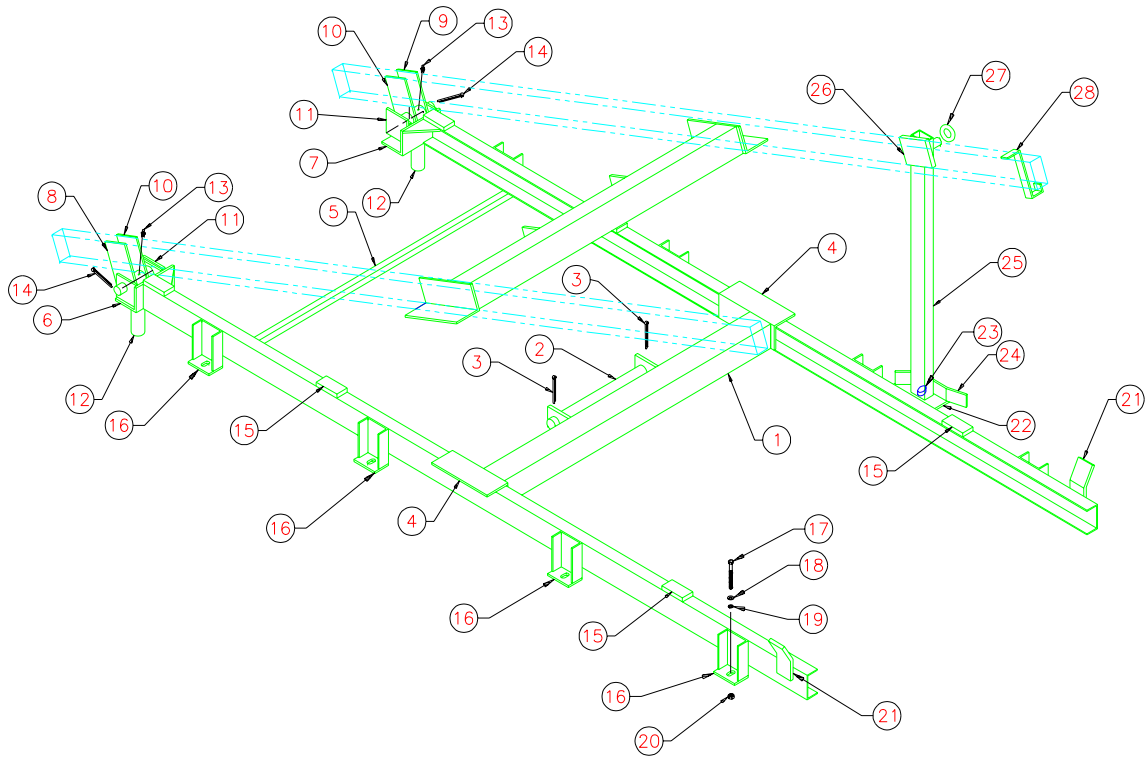
### A05 HOIST CYLINDER PARTS LIST

ITEM	PART #	QTY	DESCRIPTION	ITEM	PART #	QTY	DESCRIPTION
*	A1720	1	CYLINDER ASSEMBLY (COMPLETE)	*10	100159	2	O-RING
1	A16136	1	CYLINDER BODY ASSEMBLY	*11	100621	2	BACK-UP RING
2	100037	2	GREASE FITTING (DRIVE IN)	*12	100747	1	O-RING
3	A16143	1	CYLINDER MNT SPACER ASSY	*13	100864	1	BACK-UP RING
4	102237	3	SCREW, HX HD CAP	*14	100192	1	O-RING
5	100271	3	WASHER, LOCK	*15	102222	1	BACK-UP RING
6	100254	3	NUT, HX	*16	100135	1	WIPER RING
7	100222	1	NUT, HX	17	16142	1	GLAND NUT
8	10095	1	PISTON	18	A16139	1	CYLINDER ROD ASSEMBLY
	A9415	1	SEAL KIT	19	101936	1	DECAL, MAX CYL PRESS 2500PSI
*9	100140	1	O-RING	*20	101106	1	DECAL, ELEC PUMP

**NOTE:** \*A1720 - INCLUDES CYLINDER ASSY, SCREWS, LOCK WASHERS, NUTS, ZERKS AND SPACER.

\*9-16 - NOT SOLD SEPARATELY, SOLD AS SEAL KIT #A9415 ONLY.

\*20 - APPLY DECAL (101106) ON DASHBOARD AS NEAR AS POSSIBLE TO HOIST CONTROLS.



**A05 HOIST  
SUB FRAME PARTS LIST**

ITEM	PART #	QTY	DESCRIPTION	ITEM	PART #	QTY	DESCRIPTION
1	A16280	2	TUBE ASSY, SUB FRAME MOUNT	15	16267	6	PLATE, SUB FRAME SPACER
2	16284	2	PIN, SUB FRAME MOUNT	16	16264	8	MOUNT ASSY, SUB FRAME PEDESTAL
3	101750	4	COTTER PIN	17	101817	8	SCREW, HX HD CAP
4	16283	4	ANGLE, UPPER MOUNT	18	100838	8	WASHER, FLAT
5	16279	1	ANGLE, SUPPORT	19	100272	8	WASHER, LOCK
6	A16272	1	TAIL HINGE ASSY, RIGHT	20	300826C	8	NUT, HEX
7	A16268	1	TAIL HINGE ASSY, LEFT	21	16311	2	BOX GUIDE, FRMD
8	A16278	1	VERTICAL PLATE ASSY, RIGHT	22	16302	1	ANGLE, SAFETY PROP
9	A16275	1	VERTICAL PLATE ASSY, LEFT	23	12248	1	STOP PEG
10	16276	2	PLATE, VERTICAL	24	16303	1	SIDE PLATE, FRMD
11	A16273	2	PIN ASSY, TAIL HINGE	25	16286	1	TUBE, SAFETY PROP
12	16321	2	TUBE, SPACER	26	A16287	1	TOP PIN PLATE ASSY
13	100037	2	GREASE FITTING, DRIVE IN	*27	100556	1	WASHER, FLAT
14	100369	2	COTTER PIN	28	16304	1	LATCHING BRACKET, SMALL

**NOTE:** \*27 - WELD WASHER TO PIN AFTER INSTALLING SAFETY PROP.  
INSTALLER WILL SUPPLY TWO 3 INCH CHANNELS FOR SIDE RAILS.