



MTR Mechanical Truck Restraints

General Description

The MTR Series Mechanical Truck Restraints are designed to aid in improved safety at the dock by securing an intact and proper ICC Bar assembly on the truck/trailer rear. Restraint is accomplished by release of unique dual arms that have upper arm and hook integrated as one unit. A gas spring provides an upward bias movement of lift arms and insures constant contact with the ICC Bar. Operating range is from 12" to 30" vertically from grade and a 10" grasping range from the face of a 4" dock bumper. Operation is manual through use of control handle to activate unit with no lifting effort required by the operator. Entire assembly consists of restraint unit, communication signs, light system (MTR-2A & MTR-3A), control handle and Owner's manual.

Operation

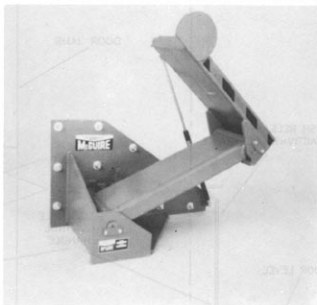
Restraint is in stored position as trailer is backed into position against dock bumpers and brakes are set. The operator makes a visual check to insure a usable ICC Bar is present. The control handle is then used to reach between the dock and the trailer and activate the release hatch. The gas spring raises the dual lift arms until upper arm with hook makes contact with ICC Bar. Upward bias will automatically maintain proper contact with ICC Bar. Interior control box on MTR-2A models only should be switched on to insure that outside red strobe light is now on and inside green light is on. A photo eye detection device is standard on the MTR-3A model. When the ICC bar makes positive contact with the restraint arm, the communication lights will change automatically. When the restraint is stored, the lights will change back. When loading/unloading is complete, and any leveler used is stored, the unit can be stored. Storage is accomplished by inserting control handle in the lowering block and pushing downward until latch holds unit in stored position. Truck may now depart and MTR is ready for the next arriving truck.

Important Note

If trailer has severely damaged or missing ICC Bar, other means must be used to restrain trailer.

Electrical (MTR-2A and MTR-3A only)

The communication system requires standard 110/115 volt, 60 cycle, single phase power for all functions, including strobe lights. Prewired interior signal and control box, and exterior prewired strobe light signal box, have self contained mounting plates.



Construction

Built for durable performance, the MTR series main mounting frames are constructed from 1/2" thick structural steel plate. The lift arms are fabricated using high strength rectangular structural steel tubing with a minimum of 46,000 psi yield strength. The hooking plate is 3/4" thick high strength steel. Grease fittings are provided at joints of moving parts for ease of maintenance. A heavy duty gas spring controls the upward movement of the dual lift arms. The entire assembly is finished in blue for exterior use.

Installation

MTR Restraints are designed to mount easily on the face of the loading dock. Restraint can be mounted to an optional new construction mounting plate that is embedded in the dock face or directly to the concrete dock face, with nine (9) 5/8" dia. x minimum 6" long Rawl Plug Co. Rawl Bolt #6945 concrete anchors.

An optional Block-out for edge of docks can also be used. Use of the plate or the anchors, provides a solid mounting that exceeds 100,000 lbs. of mounting force. Communications lights, and warning signs, should be installed in accordance with provided instructions.

Communications

MTR-1A - Communication consists of two caution signs for placement outside the dock. One regular read and one mirror read are placed at eye level to the driver when viewed through truck mirror. An operational instruction caution

sign is provided inside for dock workers.

MTR-2A - Continuous flashing red/green strobe lights and two caution signs, (one regular, one reverse at eye level), are outside the dock. A control box allows dock attendant to manually switch lights between red and green are inside. Inside lights and outside lights are always in opposing mode. Interior caution sign also provided.

MTR-3A - Continuous flashing red/green strobe lights and two caution signs, (one regular, one reverse at eye level), are outside the dock. The photo eye detection device automatically changes the lights upon positive contact with the ICC bar. Inside lights and outside lights are always in opposing mode. Interior caution sign also provided.



W.B. MCGUIRE CO., INC.

One Hudson Ave.
Hudson, NY 12534
(518) 828-7652

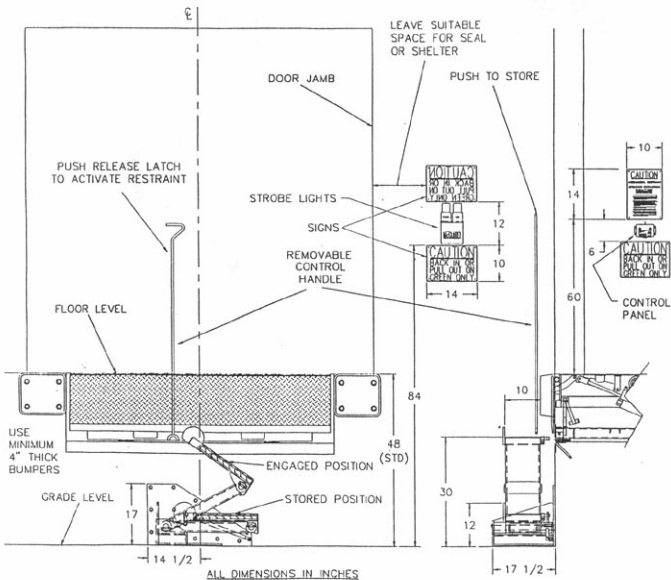
FAX: (518) 828-1262
Toll Free: 1-800-McGuire

A Division of
Overhead Door Corporation



MTR Mechanical Truck Restraint

Details & Dimensions



Customer: _____

Job: _____

Location: _____

Model: _____

CERTIFIED FOR CONSTRUCTION

By: _____ Title: _____

Date: _____ Company: _____

City/State: _____

Serviceable to trucks with ICC bar 12" to 30" off grade. Restraint may be used with hydraulic, mechanical, electric, or EOD type levelers with optional blackout for EOD.

Represented By: