



# HTR-1A Hydraulic Truck Restraint

## GENERAL DESCRIPTION

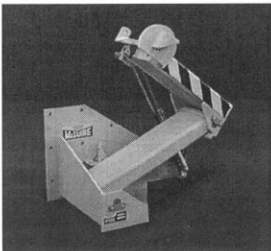
The HTR-1A Hydraulic Truck Restraint by McGuire is designed to aid in improved safety at the dock by securing an intact and proper ICC bar assembly on the truck/trailer rear. Restraint is accomplished by release of 3" structural steel arms that have upper arm and hook integrated as one unit. A gas spring provides an upward bias movement of arms and insures constant contact to the ICC bar. Operating range is from 12' to 30' vertically from grade and a 10' grasping range from the face of a 4" thick bumper. Operation is automatic through the use of a control panel to activate the unit with no lifting effort required by the operator. Entire assembly consists of restraint unit, communication signs, communication light package, control/pump enclosure and Owner's Manual.

## OPERATION

Restraint is in stored position as trailer is backed into position against dock bumpers and brakes are set. The operator makes a visual check to insure a usable ICC bar is present. The selector switch on the control panel is turned to the "UP" position, releasing the restraint, allowing it to rise. The gas spring raises the lift arms until upper arm with hook makes contact with ICC bar. Another visual check should take place to insure that hook has properly engaged ICC bar. Positive contact with the ICC bar turns on the outside red strobe light and inside green light. Upward bias unit will automatically maintain proper contact with ICC bar during loading/unloading operations. When loading/unloading is complete, and any leveler used is stored, the unit can be stored. Storage is accomplished by turning the selector switch on the control panel to the "DOWN" position. When properly stored, the outside green strobe light illuminates, and the inside red light illuminates. Truck may now depart and the HTR-1A is ready for the next incoming truck.

## IMPORTANT NOTE

If trailer has severely damaged or missing ICC bar that restraint cannot engage, other means must be used to restrain trailer.



## HTR-1A Upgrades

- Hooking Plate is 3/4" thick
- Infra-Red photo-eye detection
- 3" structural steel arms
- Bi-directional hydraulic system
- Wiring re-routed for improved movement

## ELECTRICAL

The HTR-1A system requires standard 110/115 volt, 60 cycle, single phase power for all functions, including strobe lights. Prewired interior control/pump enclosure and exterior prewired strobe light signal box have self contained mounting plates.

## CONSTRUCTION

Built for durable performance, the HTR-1A main mounting frame is constructed from 1/2" thick steel plate. The arms are fabricated using high strength rectangular structural steel tubing with a minimum of 46,000 lbs. yield strength. The hooking plate is 3/4" thick high strength steel. Grease fittings are provided at joints of moving parts for ease of maintenance. A heavy duty gas spring controls the upward movement of the lift arms. The entire assembly is finished in blue "tiger coal" finish for exterior use.

## INSTALLATION

The HTR-1A restraint is designed to mount easily on the face of the loading dock. Restraint can be mounted to an optional new construction mounting plate that is embedded in the dock face or directly to the concrete dock face, with nine (9) 5/8" dia. x minimum 6" long Rawl Plug Co. Rawl Bolt #6945 concrete anchors. An optional blackout must be used with face-mount edge of dock levelers. Pullout resistance is a minimum of 32,000 lbs.; mounting force is in excess of 100,000 lbs. Communication lights, and warning signs should be installed in accordance with provided instructions.

## COMMUNICATION

The safety communication system for the HTR-1A consists of the following:

### Outside

Continuous flashing red/green strobe lights and two caution signs, one regular read and one reverse read, that are placed at eye level to the truck driver. Photo eye on restraint arm senses presence of ICC bar.

### Inside

A control/pump enclosure with red/green lights and selector switch that allows the lights to automatically change between red and green. Inside lights an outside lights are always in opposing mode. Alarm horn sounds if restraint arm fails to sense proper ICC bar. Keyed ON/OFF switch controls electrical power to unit. An interior caution sign is also provided.

## WARRANTY

The HTR-1A is warranted to be free from defects in materials and workmanship for a period of two years from the date of installation. This warranty covers parts and labor. All warranties are subject to standard limitations of liability.

## OPTIONS

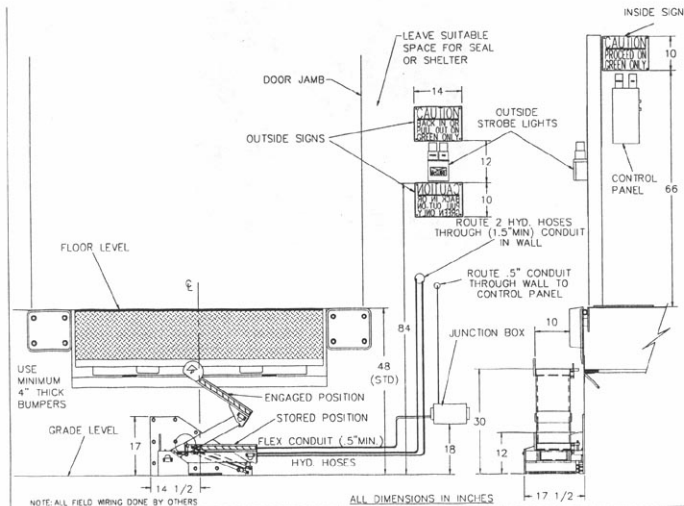
- New Construction steel mounting plate.
- Steel Blockout for face mount edge of dock levelers.
- Dock leveler interconnect.



W.B. McGuire Company, Inc.  
One Hudson Ave. • Hudson, NY 12534  
(518) 828-7652 • Fax 828-1262  
1-800-624-8473 • www.wbmcguire.com

# McGUIRE HTR-1A Hydraulic Truck Restraint

## Details and Dimensions



Customer: \_\_\_\_\_

Job: \_\_\_\_\_

Location: \_\_\_\_\_

Model: \_\_\_\_\_

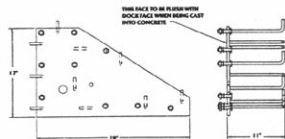
**Certified for Construction/Installation**

By: \_\_\_\_\_

Date: \_\_\_\_\_

Company: \_\_\_\_\_

## OPTIONAL MOUNTING PLATE



PART # 602-018

REPRESENTED BY: